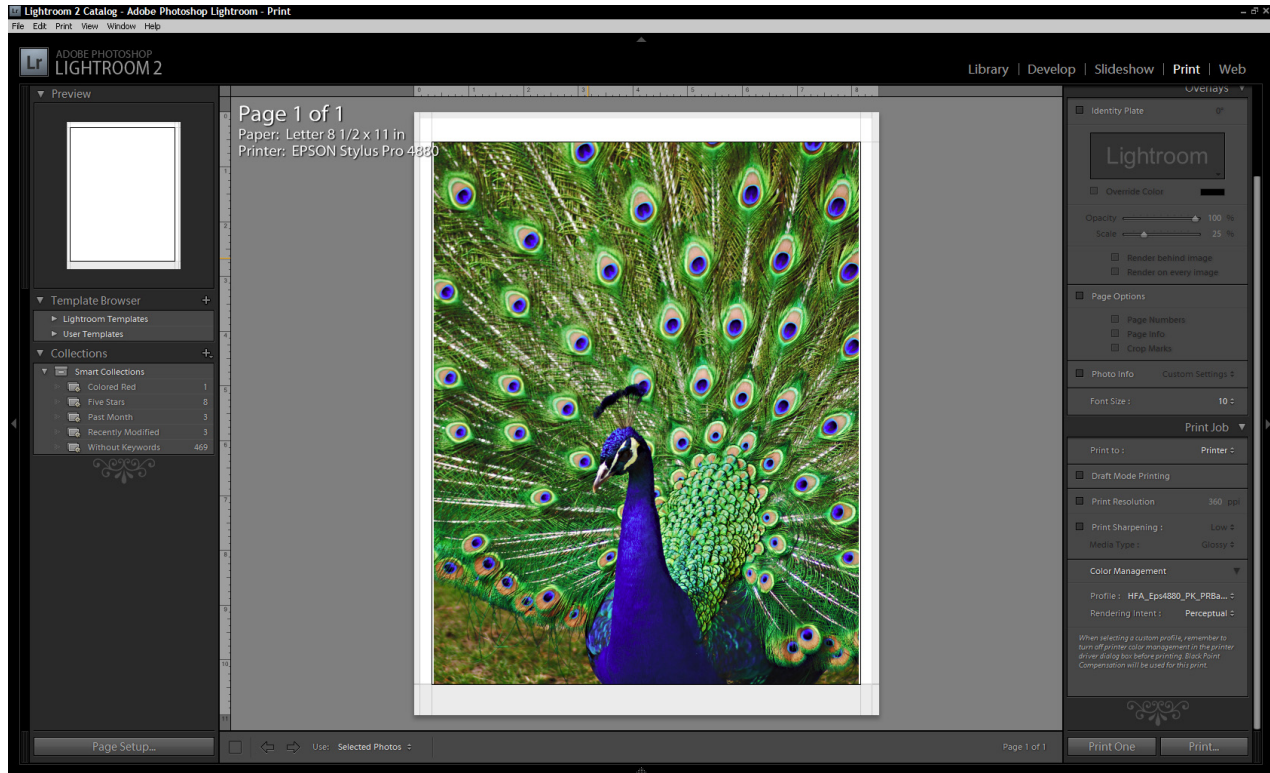


PHOTOSHOP® LIGHTROOM® 2 QUICK PRINT GUIDE (PC)

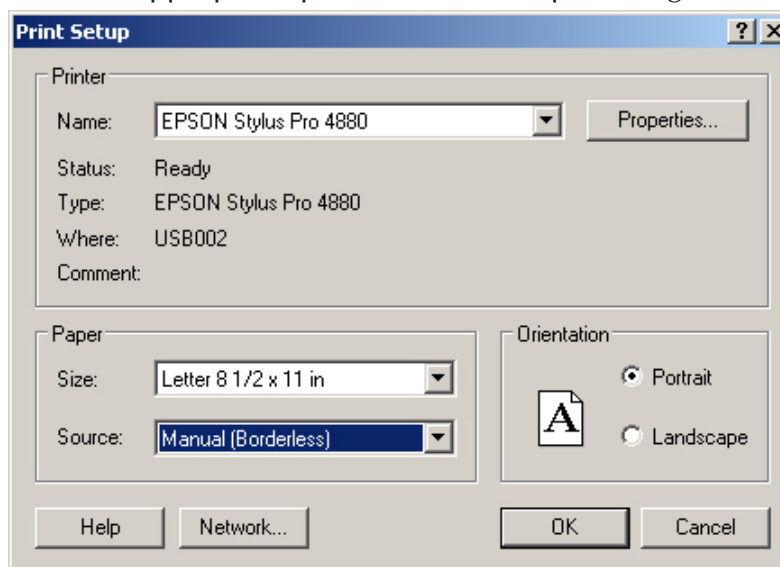
Under the “Print” Module...

1. Click “Page Setup...”



2. Under “Print Setup” >

- A. “Printer” > “Name” > Select the printer to be used from the drop down menu if not selected
- B. “Size:” > Select appropriate paper size
- C. “Source:” > Select appropriate paper feed source (i.e. Manual, Roll, Front Feeder, etc.)
- D. “Orientation” > Select appropriate portrait or landscape setting

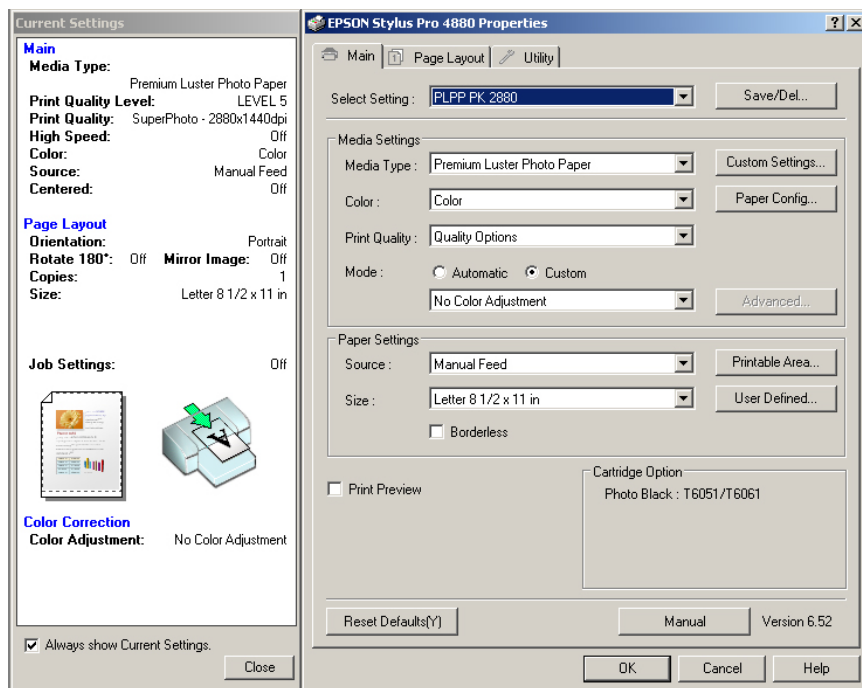


- E. Click Properties...

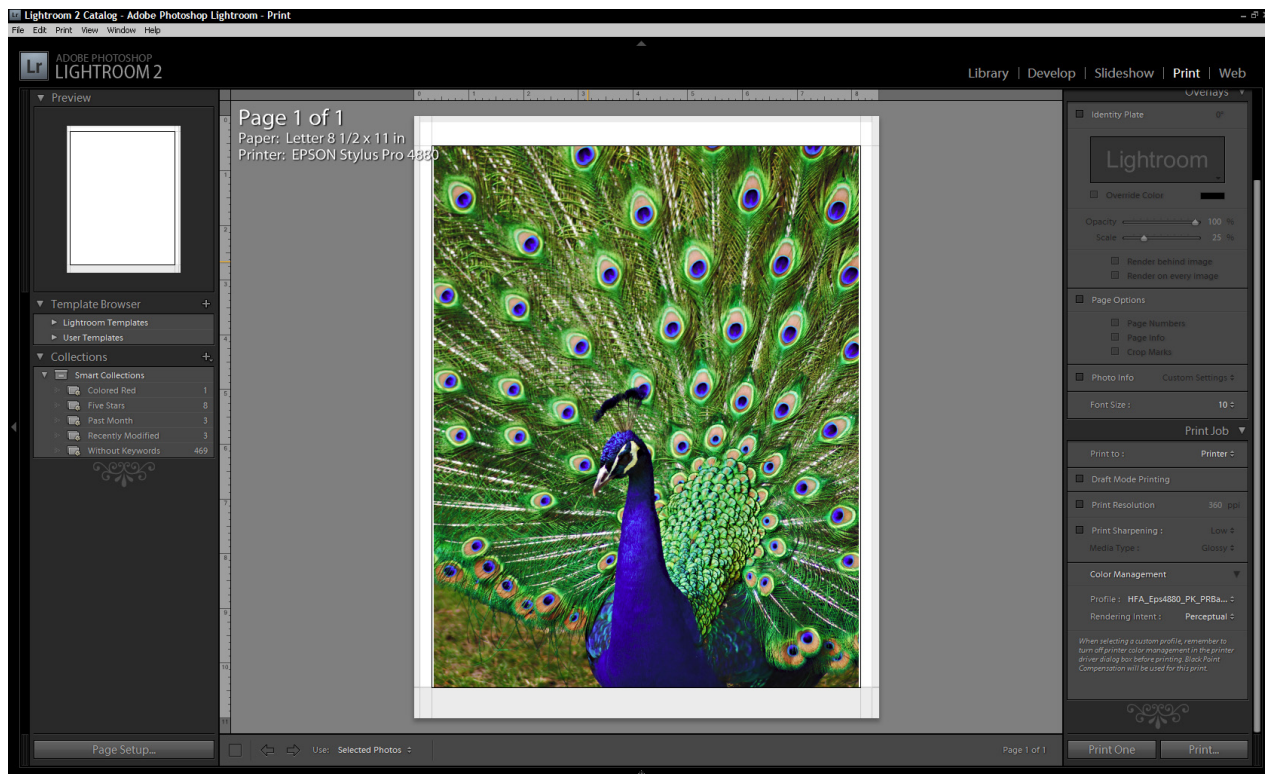
3. Under "Properties..." >

Print setting driver menus & options may vary (consult the manufacturers manual or help file) but the essential options to set are:

- The recommended media setting
- 1440 or 2880 dpi (or highest print quality setting depending on preference & printer)
- Turning off any high speed option
- Turning off any printer color management

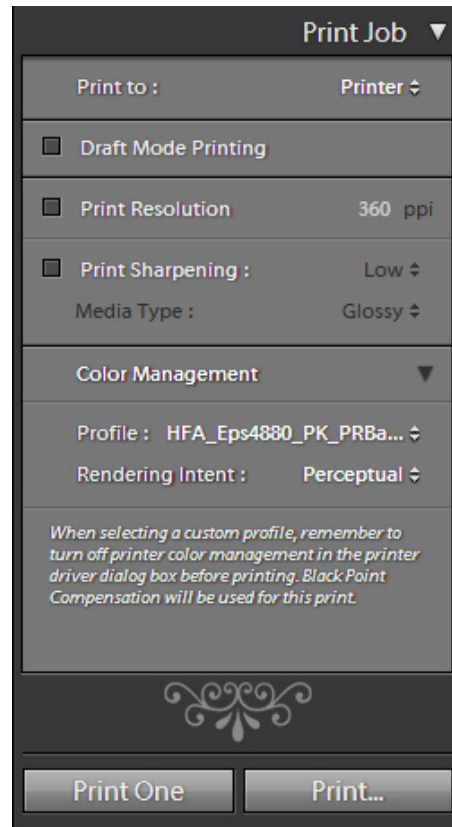


4. Click "OK" on the preceding menus until returning to the original "Print" Lightroom® Module

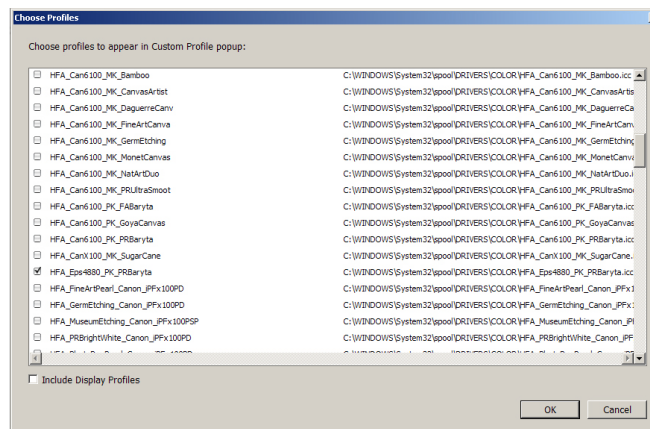


Make any other desired Lightroom® Print Module settings

Under the “Print Job” drop down panel...



1. Under “Print to:” make sure “Printer” is selected
2. Make sure “Draft Mode Printing” is unchecked
3. In “Color Management” under “Profile:” select “Other...” from the ‘Managed By Printer’ drop down menu
 - A. Select the relevant profile from the list and press “OK” (Note: Once you select a profile it should appear in the “Profile: Managed By Printer” Drop down menu for future use)



4. Under “Rendering Intent” select “Perceptual”

Click “Print One” or “Print...” when finished