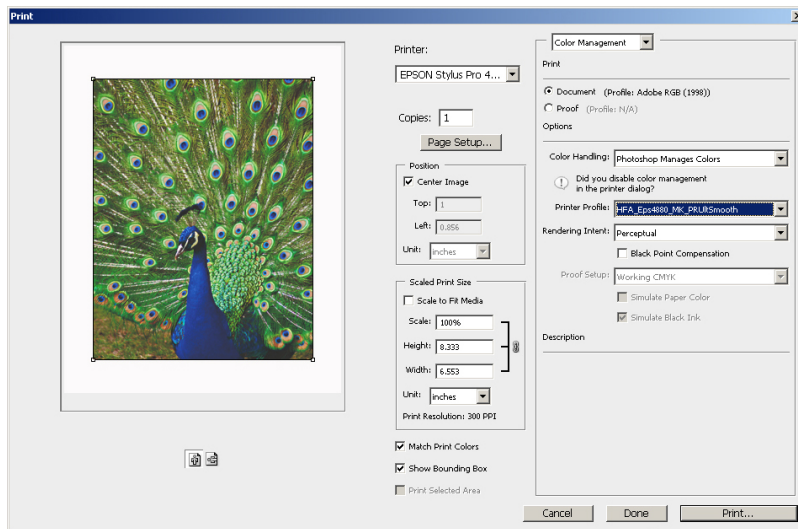


PHOTOSHOP® CS3 QUICK PRINT GUIDE (PC)

1. Select “Print...” from the file drop down menu.



2. Select the printer being used from the drop down menu if it is not the default option.

3. Select “Page Setup...” >

A (i). Epson® Printers

I. “Media Type” > Select recommended paper setting

II. “Print Quality:” > “Quality Options” >

a. Select “4” (1440 dpi) or “5” (2880 dpi)

b. Uncheck “High Speed”

c. Check “Finest Detail”

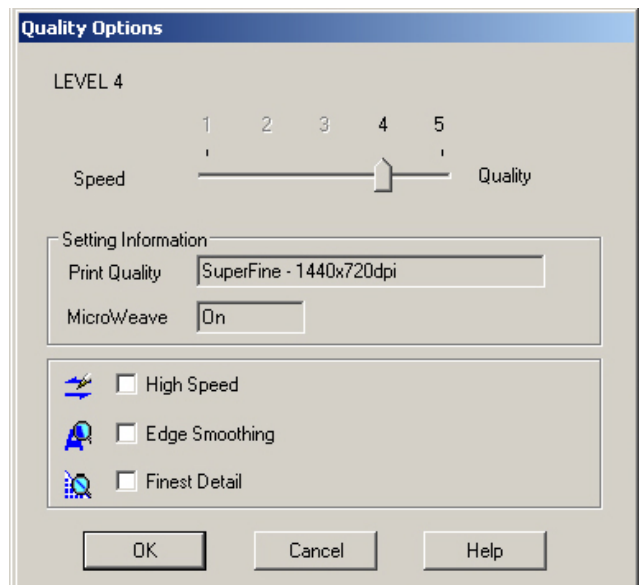
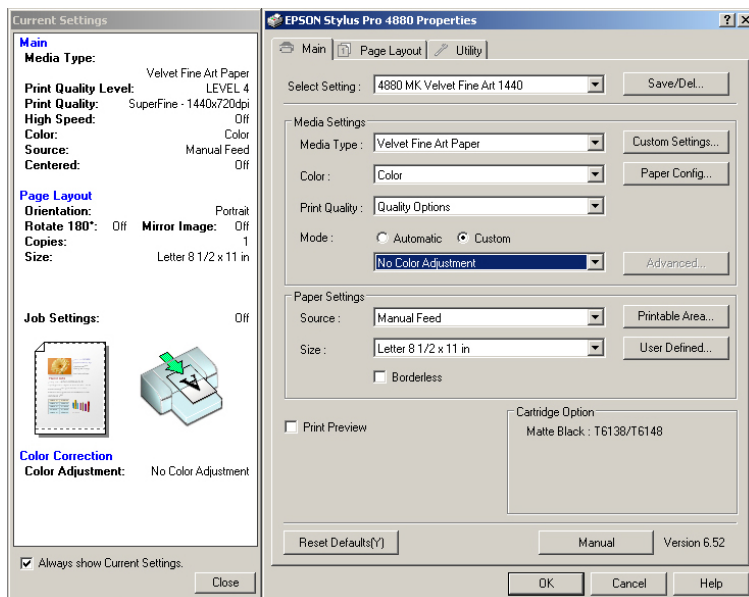
d. Select “OK” when finished

III. “Mode:” > Select “Custom” > Select “No Color Adjustment” from the drop down menu below.

IV. “Source:” Select appropriate paper feed

V. “Size:” Select appropriate paper size

VI. Select “OK” when finished



B (ii). Other Printers

Other printers print setting menus vary (consult the manufacturers manual or help file) but the main options to set are:

- Select recommended media setting
- 1440 or 2880 dpi (or highest quality setting depending on quality preference)
- Turn off any printer color management
- Turn off any high speed option

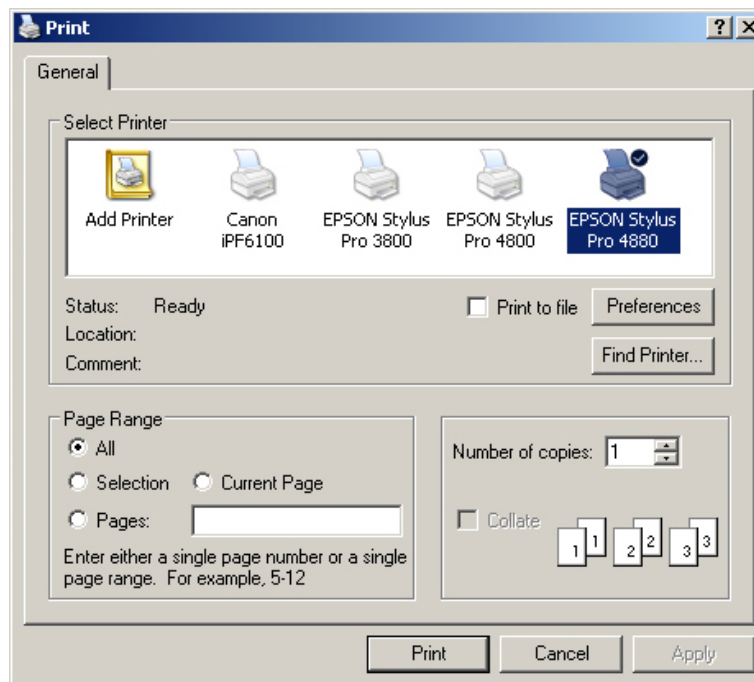
Select "OK" when finished

4. Under "Color Management" > "Options" >

- "Color Handling:" > Select "Photoshop Manages Colors"
- "Printer Profile:" > Select the relevant ICC profile for printer, paper & ink combination
- "Rendering Intent:" > Select "Perceptual"
- Uncheck "Black Point Compensation"
- Select "Print..." when finished

5. Under "Print" >

- "Select Printer" > If the printer used is not the default option, select it from the menu.
- Select and set any other options you may need



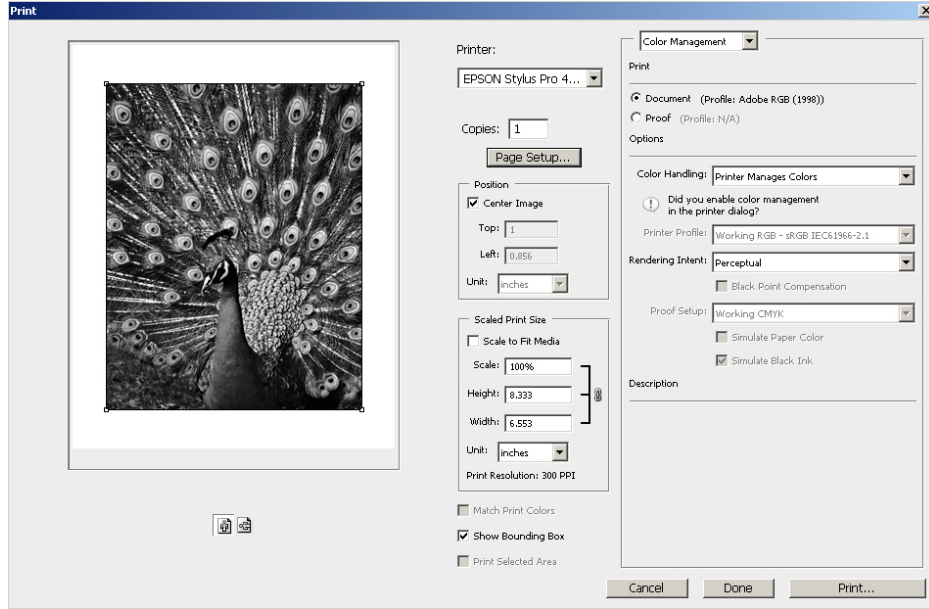
6. Select "Print" when finished

FOR ADVANCED BLACK AND WHITE PHOTO MODE

1. In "Print..." >

2. Under "Color Management" >

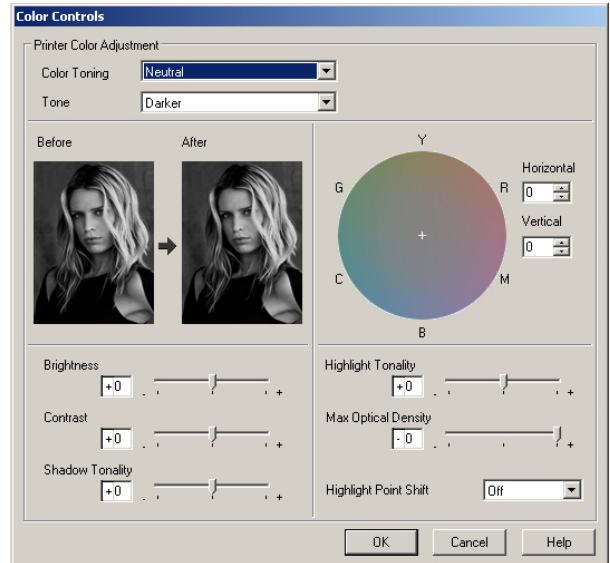
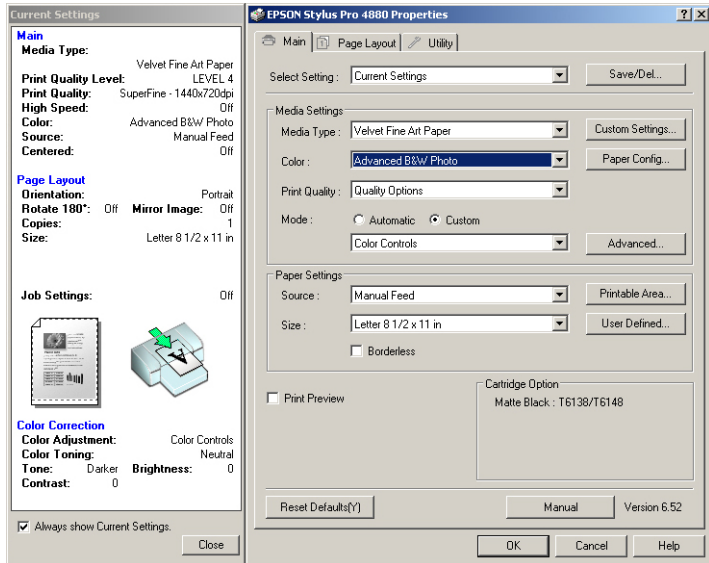
A. "Color Handling" > Select "Printer Manages Colors" This turns off the printer profile so that it will not interfere with the Black & White advance mode.



3. Under "Page Setup..." >

For Epson® printers:

- A. "Color:" > Select "Advanced B&W Photo"
- B. "Mode:" > Select "Custom"
- C. "Advanced..." > Modify settings for desired results



For other printers:

- Consult manual or help file for advanced black and white printing options.