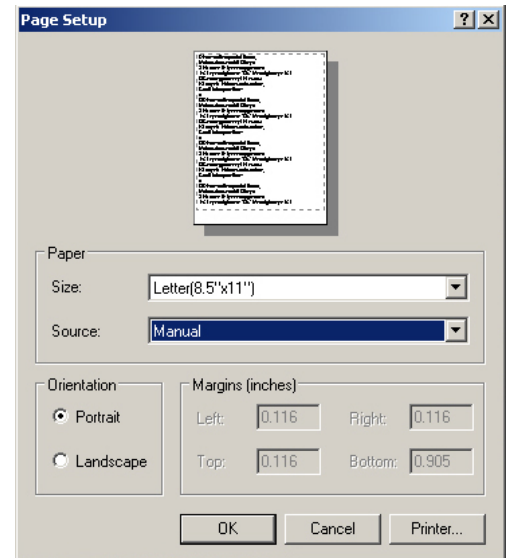
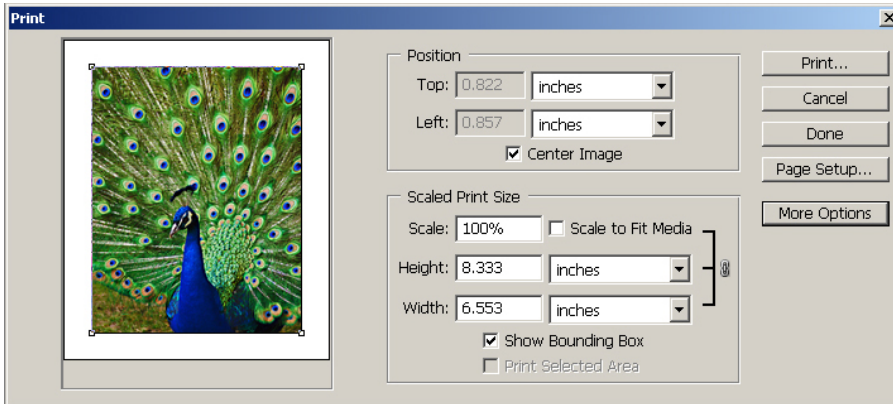


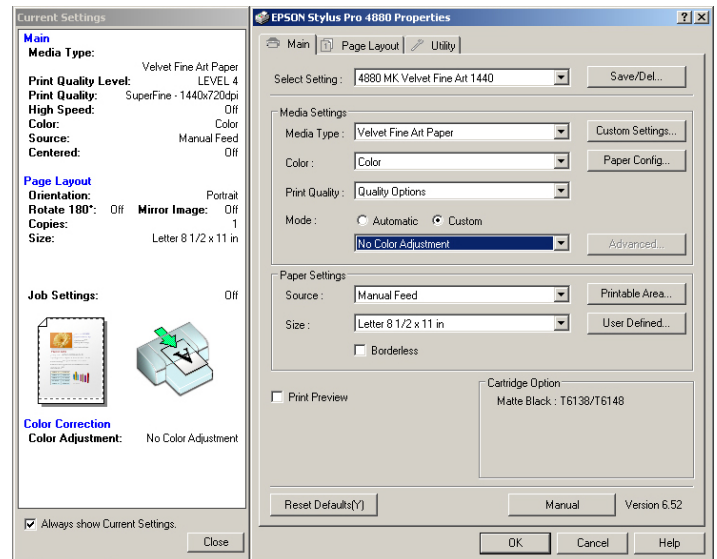
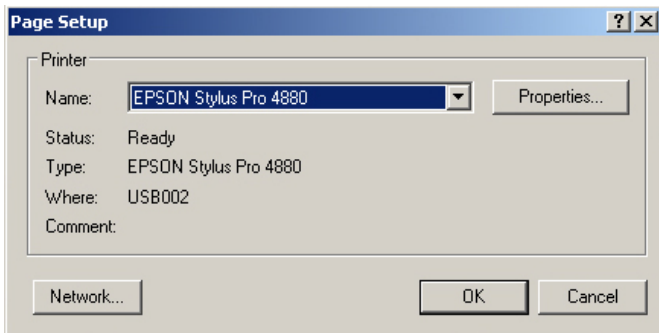
PHOTOSHOP® CS2 QUICK PRINT GUIDE (PC)

1. Select “Print With Preview” from the file drop down menu.



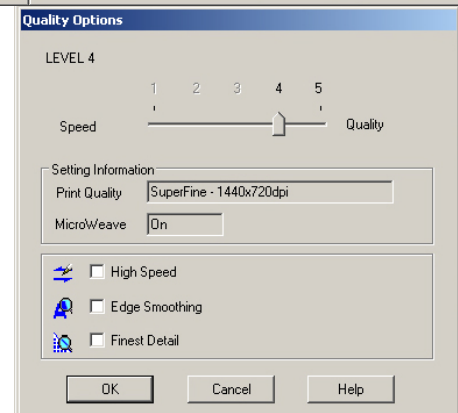
2. Select “Page Setup” >

- A. “Size:” > Select appropriate paper size
- B. “Source:” > Select appropriate paper feed source (i.e. Manual, Roll, Front Feeder, etc.)
- C. “Orientation” > Select appropriate portrait or landscape setting
- D. Select “Printer...” >
 - I. “Name:” > If the printer used is not the default option, select it from the drop menu.



II (a). Epson® Printers - “Select Properties...” >

- a. “Media Type” > Select recommended paper setting
- b. “Print Quality:” > “Quality Options” >
 - i. Select “4” (1440 dpi) or “5” (2880 dpi)
 - ii. Uncheck “High Speed”
 - iii. Check “Finest Detail”
 - iv. Select “OK” when finished
- c. “Mode:” > Select “Custom” > Select “No Color Adjustment” from the drop down menu below.



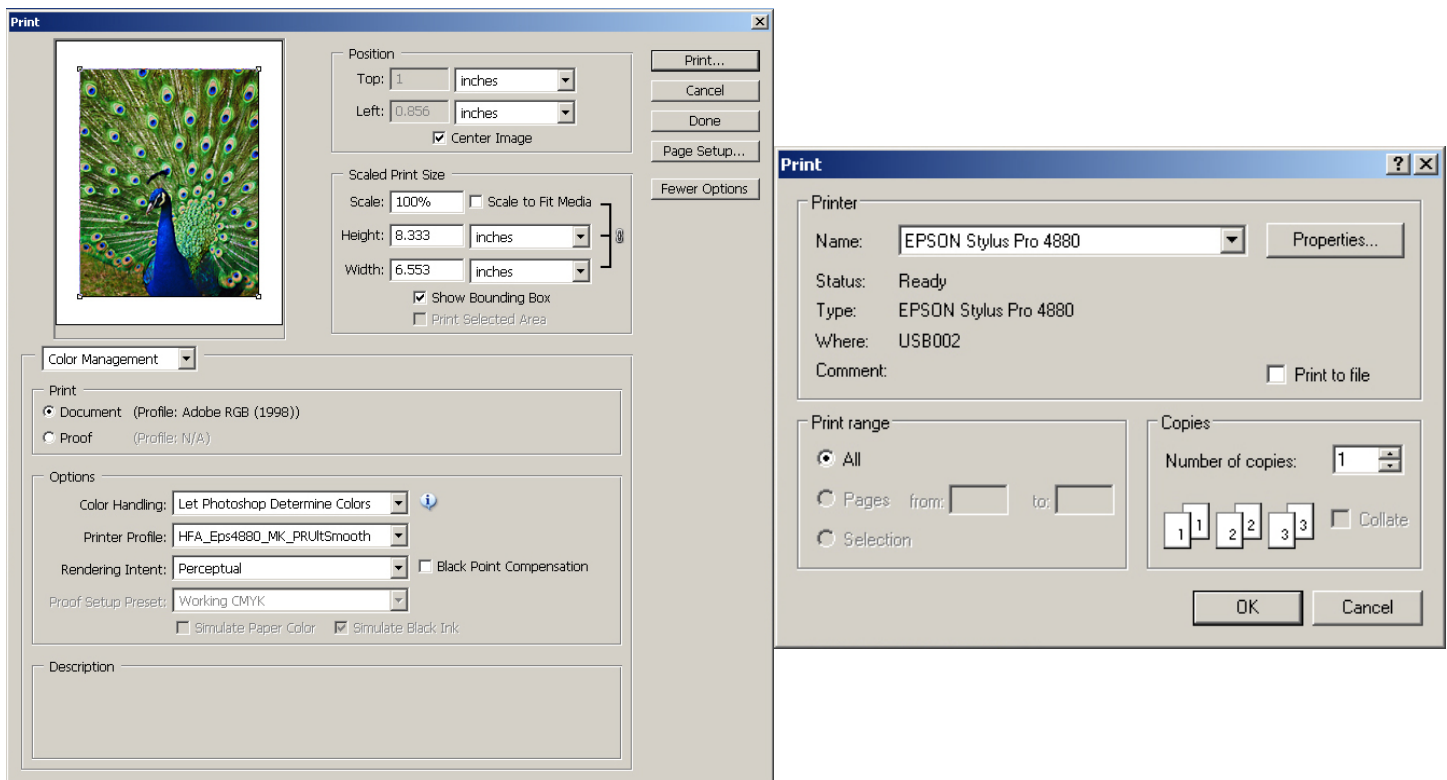
II (b). Other Printers - Select "Properties..." >

Other printers print setting menus vary (consult the manufacturers manual or help file) but the main options to set are:

- Select recommended media setting
- 1440 or 2880 dpi (or highest quality setting depending on quality preference)
- Turn off any printer color management
- Turn off any high speed option

Select "OK" on the preceding menus until returning to the original "Print With Preview" menu

3. Select "More Options"



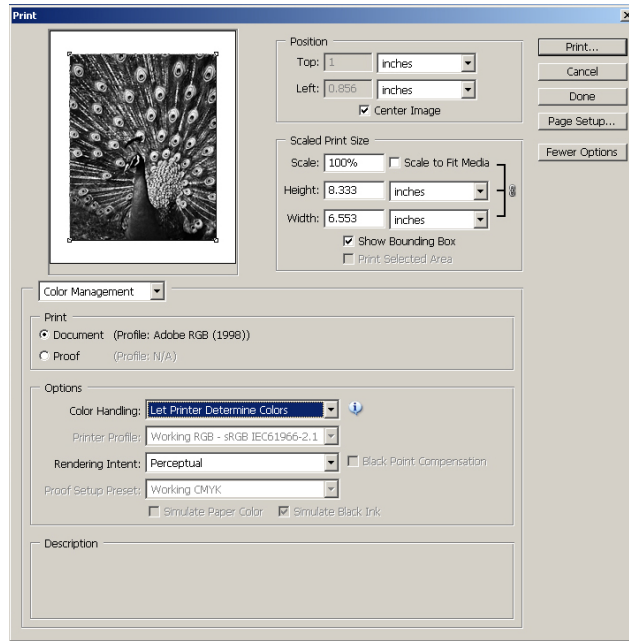
4. Under "Options" >

- "Color Handling" > Select "Let Photoshop Determine Colors"
- "Printer Profile" > Select the relevant ICC profile for printer, paper & ink combination
- "Rendering Intent" > Select "Perceptual"
- Uncheck "Black Point Compensation"
- Select "Print" when finished

5. Under "Print" > Select "OK" when finished with any other printing options.

FOR ADVANCED BLACK AND WHITE PHOTO MODE

1. In “Print With Preview” > “Options” > “Color Handling” > Select “Let Printer Determine Colors” This turns off the printer profile so that it will not interfere with the B&W advance mode.



2. Under “Page Setup...” > Printer > Properties... >

For Epson® printers:

- A.** “Color:” > Select “Advanced B&W Photo”
- B.** “Mode:” > Select “Custom”
- C.** “Advanced...” > Modify settings for desired results

For other printers:

- Consult manual or help file for advanced black and white printing options.

